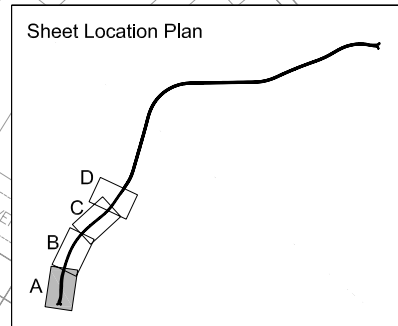


KEY	
	Impact on residential properties
	Impact on commercial properties
	Substantial adverse impact
	Moderate adverse impact
	Slight adverse impact
	Negligible impact
	Slight beneficial impact
	Moderately beneficial impact
	Substantially beneficial impact
	Substantial adverse impact
	Moderate adverse impact
	Slight adverse impact
	Negligible impact
	Public footpath
	Permissive path
	Byway
	BHLR Scheme Centreline



This map is reproduced from Ordnance Survey material with the permission of Ordnance Survey on behalf of the Controller of Her Majesty's Stationary Office © Crown copyright. Unauthorised reproduction infringes Crown copyright and may lead to prosecution or civil proceedings. 100019601 (2008)

## BEXHILL TO HASTINGS LINK ROAD

Figure : 13.12A	Scale	1:1250
Visual Impact Urban - Year 0	Sheet	1 of 4
	Revision	01
		April 2008

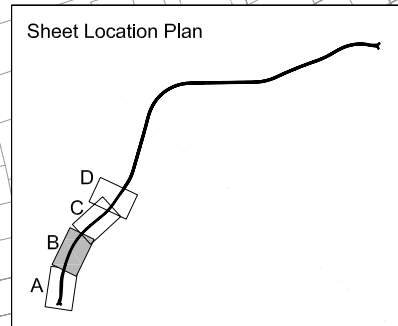
Carolyn Dwyer BEng (Hons), DipTrans, DMS, MIHT MIIT  
 Assistant Director, Transport & Waste  
 County Hall, St. Anne's Crescent  
 Lewes, East Sussex BN7 1UE  
 Telephone: 01273 481000

Transport & Environment





KEY	
	Impact on residential properties
	Impact on commercial properties
	Substantial adverse impact
	Moderate adverse impact
	Slight adverse impact
	Negligible impact
	Slight beneficial impact
	Moderately beneficial impact
	Substantially beneficial impact
	Substantial adverse impact
	Moderate adverse impact
	Slight adverse impact
	Negligible impact
	Public footpath
	Permissive path
	Byway
	<b>Scheme Details</b>
	BHLR Scheme Centreline



This map is reproduced from Ordnance Survey material with the permission of Ordnance Survey on behalf of the Controller of Her Majesty's Stationery Office © Crown copyright. Unauthorised reproduction infringes Crown copyright and may lead to prosecution or civil proceedings. 100019601 (2008)

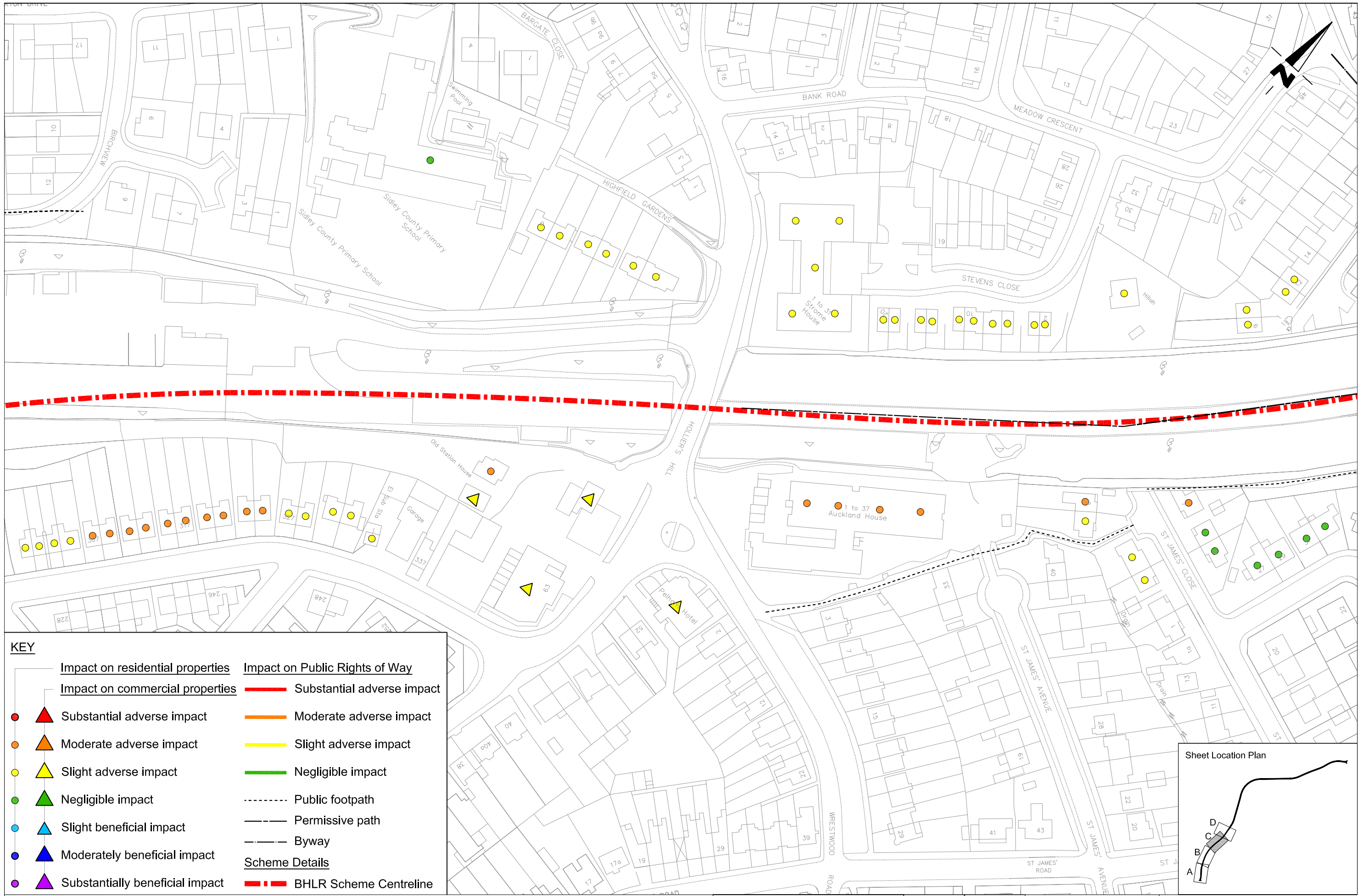
## BEXHILL TO HASTINGS LINK ROAD

Figure : 13.12B	Scale	1:1250
Visual Impact Urban - Year 0	Sheet	2 of 4
	Revision	01
		April 2008

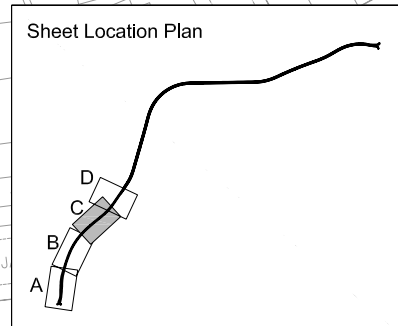
Carolyn Dwyer BEng (Hons), DipTrans, DMS, MIHT MIET  
 Assistant Director, Transport & Waste  
 County Hall, St. Anne's Crescent  
 Lewes, East Sussex BN1 1UE  
 Telephone: 01273 481000

Transport & Environment





KEY	
	BHLR Scheme Centreline
	Substantial adverse impact
	Moderate adverse impact
	Slight adverse impact
	Negligible impact
	Slight beneficial impact
	Moderately beneficial impact
	Substantially beneficial impact
	Substantial adverse impact
	Moderate adverse impact
	Slight adverse impact
	Negligible impact
	Public footpath
	Permissive path
	Byway
<b>Scheme Details</b>	
	BHLR Scheme Centreline
	Substantial adverse impact
	Moderate adverse impact
	Slight adverse impact
	Negligible impact
	Public footpath
	Permissive path
	Byway



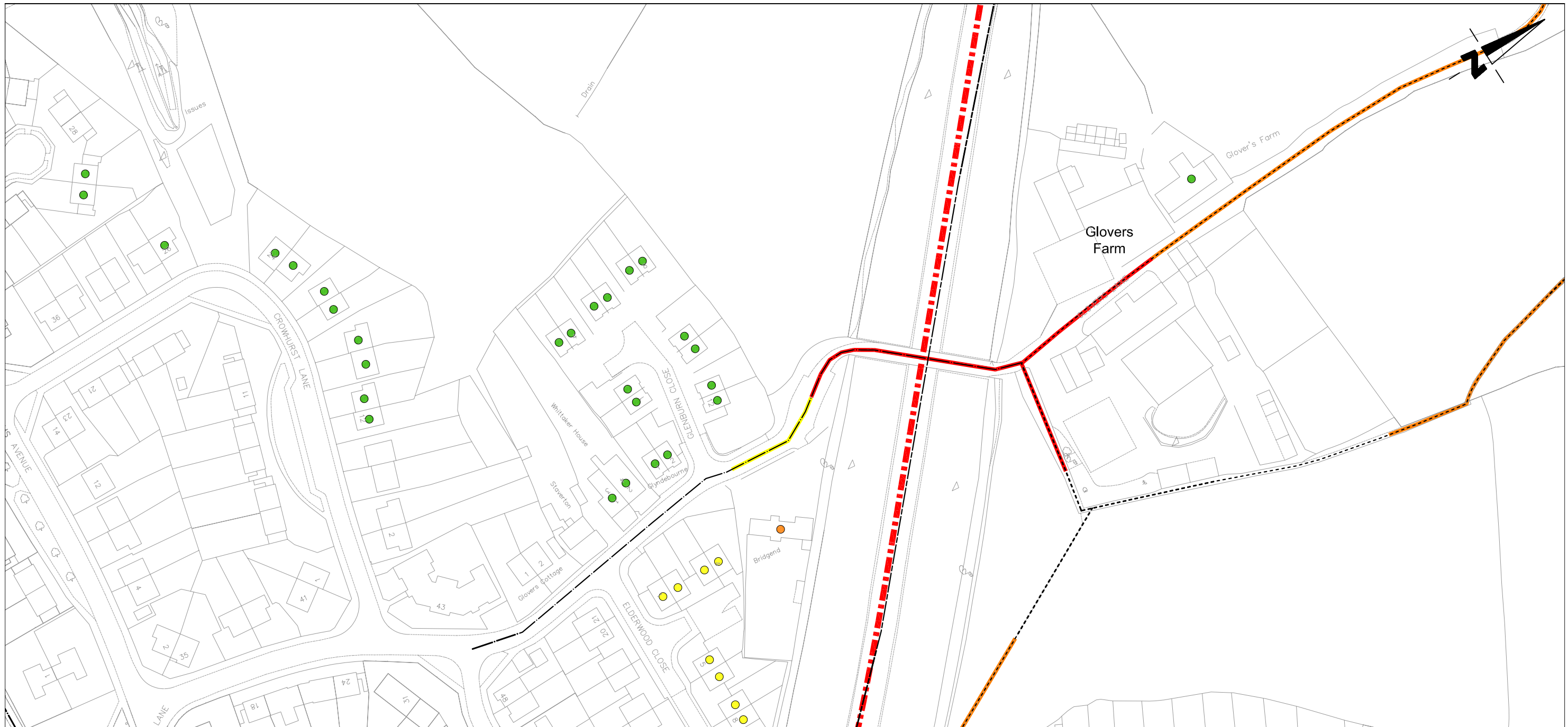
This map is reproduced from Ordnance Survey material with the permission of Ordnance Survey on behalf of the Controller of Her Majesty's Stationary Office © Crown copyright. Unauthorised reproduction infringes Crown copyright and may lead to prosecution or civil proceedings. 100019601 (2008)

## BEXHILL TO HASTINGS LINK ROAD

Figure : 13.12C	Scale	1:1250	Carolyn Dwyer BEng (Hons), DipTrans, DMS, MIHT MIIT Assistant Director, Transport & Waste County Hall, St. Ann's Crescent Lewes, East Sussex BN7 1UE Telephone: 01273 481000
Visual Impact Urban - Year 0	Sheet	3 of 4	
	Revision	01	

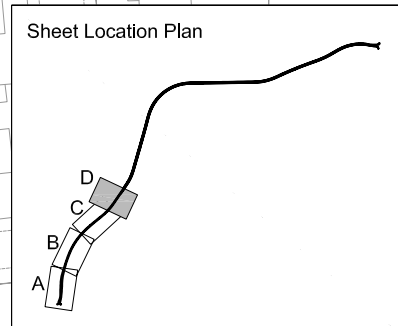
Transport & Environment





**KEY**

	<u>Impact on residential properties</u>		<u>Impact on Public Rights of Way</u>
	<u>Impact on commercial properties</u>		Substantial adverse impact
	Substantial adverse impact		Moderate adverse impact
	Moderate adverse impact		Slight adverse impact
	Slight adverse impact		Negligible impact
	Negligible impact		Public footpath
	Slight beneficial impact		Permissive path
	Moderately beneficial impact		Byway
	Substantially beneficial impact		<u>Scheme Details</u>
			BHLR Scheme Centreline



This map is reproduced from Ordnance Survey material with the permission of Ordnance Survey on behalf of the Controller of Her Majesty's Stationary Office © Crown copyright. Unauthorised reproduction infringes Crown copyright and may lead to prosecution or civil proceedings. 100019601 (2008)

## BEXHILL TO HASTINGS LINK ROAD

Figure : 13.12D

Visual Impact Urban - Year 0

Scale	1:1250
Sheet	4 of 4
Revision	01

Carolyn Dwyer BEng (Hons), DipTrans, DMS, MIHT MIIT  
 Assistant Director, Transport & Waste  
 County Hall, St. Anne's Crescent  
 Lewes, East Sussex BN7 1UE  
 Telephone: 01273 481000

Transport & Environment

